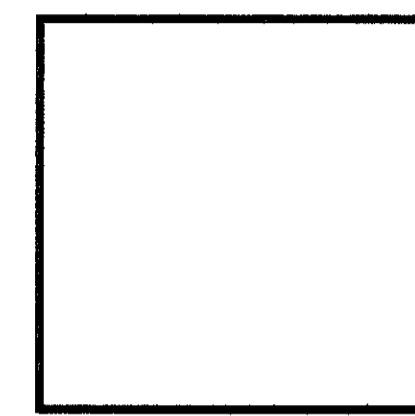
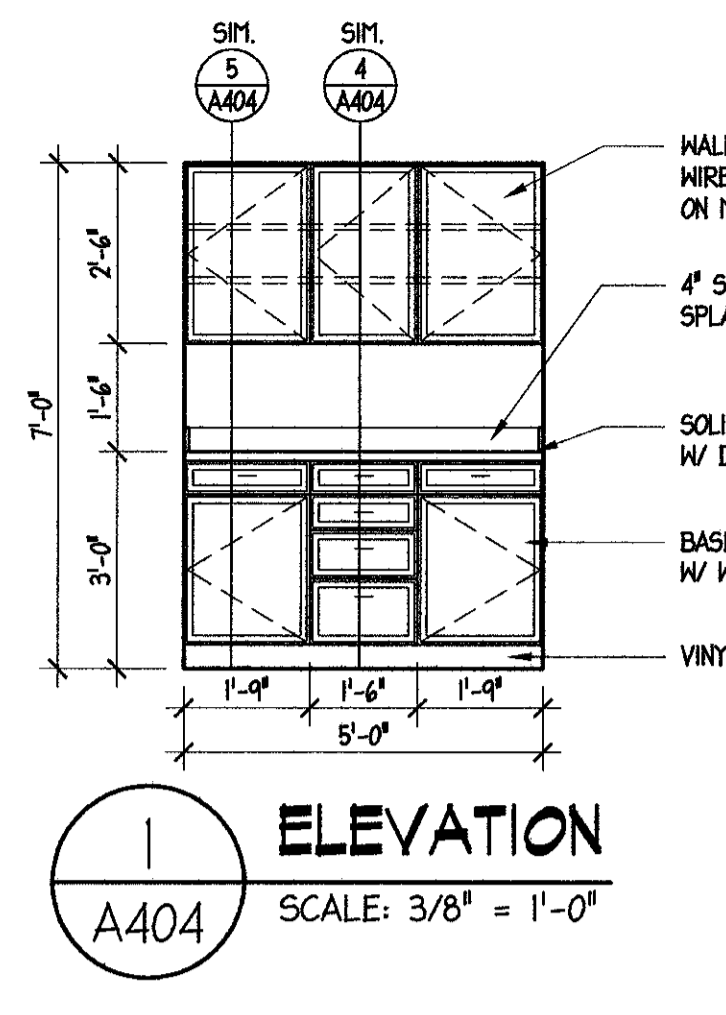
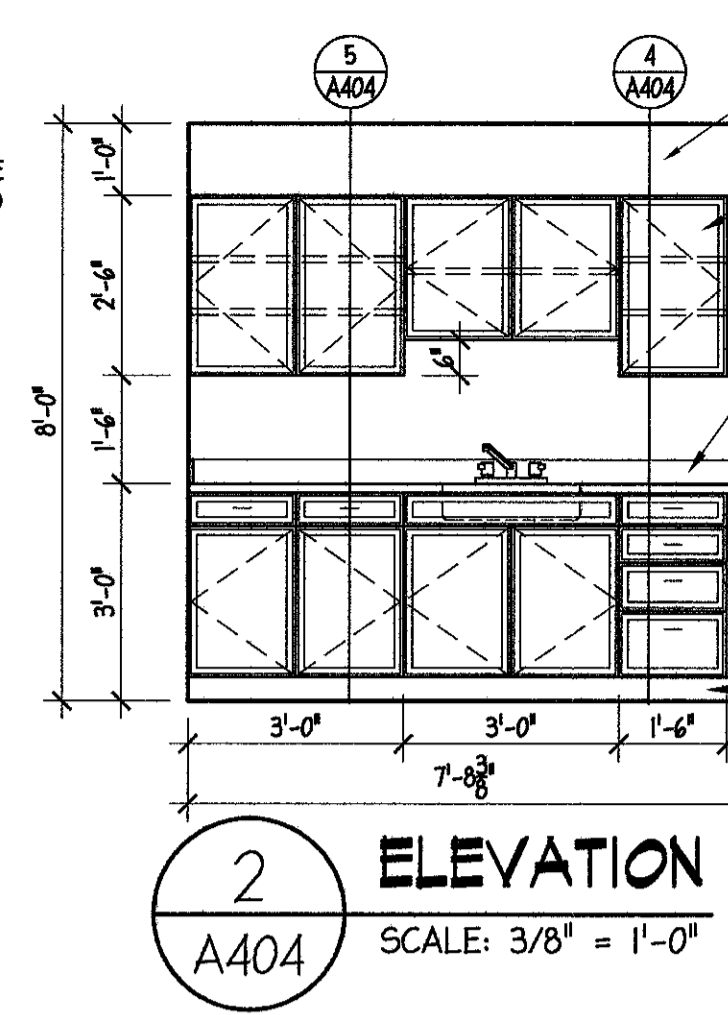
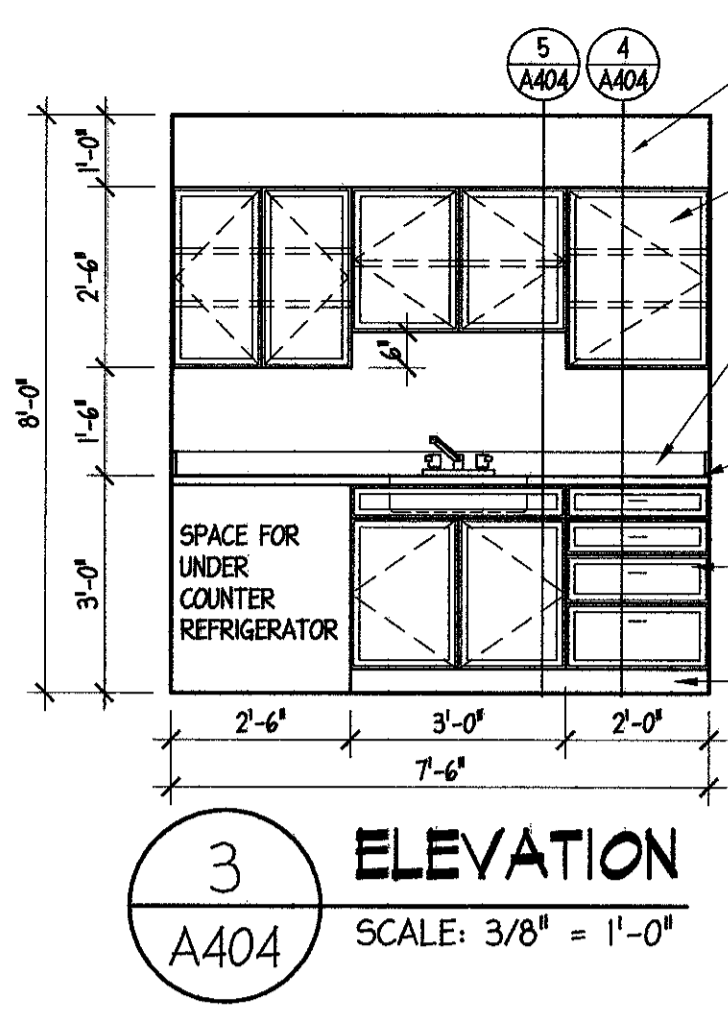


DATE:	MARCH 8, 2006
FILE:	05-127-A403
DRAWN BY:	JMH
CHECKED BY:	WFH
REVISIONS:	



FORUM ARCHITECTS, LLC
 Suite 200
 Indiana
 122 S. Michigan St.
 South Bend
 Phone: 574.233.2119
 Fax: 574.288.0924

NEW BUILDING FOR:
ST. JOSEPH COUNTY PUBLIC LIBRARY
 NORTH LIBERTY COMMUNITY BRANCH
 NORTH LIBERTY, INDIANA
 MAIN & MARKET STREETS



NOTE: FOR WOOD CABINETRY
 PROVIDE RAISED PANEL DOOR
 AND DRAWER FRONT STYLE

GYPSUM BOARD SOFFIT
 WALL HUNG CABINETS W/ ADJ. SHELVES ON MTL. STANDARDS
 REVEAL OVERLAY DOOR PANELS W/ WIRE PULLS
 CONCEALED HARDWARE

PLASTIC LAMINATE OR SOLID SURFACE COUNTERTOP AND BACKSPLASH
 DECORATIVE EDGE
 REVEAL OVERLAY DRAWER W/ WIRE PULLS
 REVEAL OVERLAY DOOR PANELS W/ WIRE PULLS
 ADJUSTABLE SHELF ON METAL STANDARDS
 CONCEALED HARDWARE
 VINYL BASE (TYP)

5 CABINET SECTION
 A404 SCALE: 1 1/2" = 1'-0"

NOTE: FOR WOOD CABINETRY
 PROVIDE RAISED PANEL DOOR
 AND DRAWER FRONT STYLE

GYPSUM BOARD SOFFIT
 WALL HUNG CABINETS W/ ADJ. SHELVES ON MTL. STANDARDS
 REVEAL OVERLAY DOOR PANELS W/ WIRE PULLS
 CONCEALED HARDWARE

PLASTIC LAMINATE OR SOLID SURFACE COUNTERTOP AND BACK SPLASH
 DECORATIVE EDGE
 REVEAL OVERLAY DRAWERS W/ WIRE PULLS
 VINYL BASE (TYP)

4 CABINET SECTION
 A404 SCALE: 1 1/2" = 1'-0"